

Greifer | Parallelgreifer

Halter für Parallelgreifer Serie 126

Halter für Parallelgreifer Serie 126



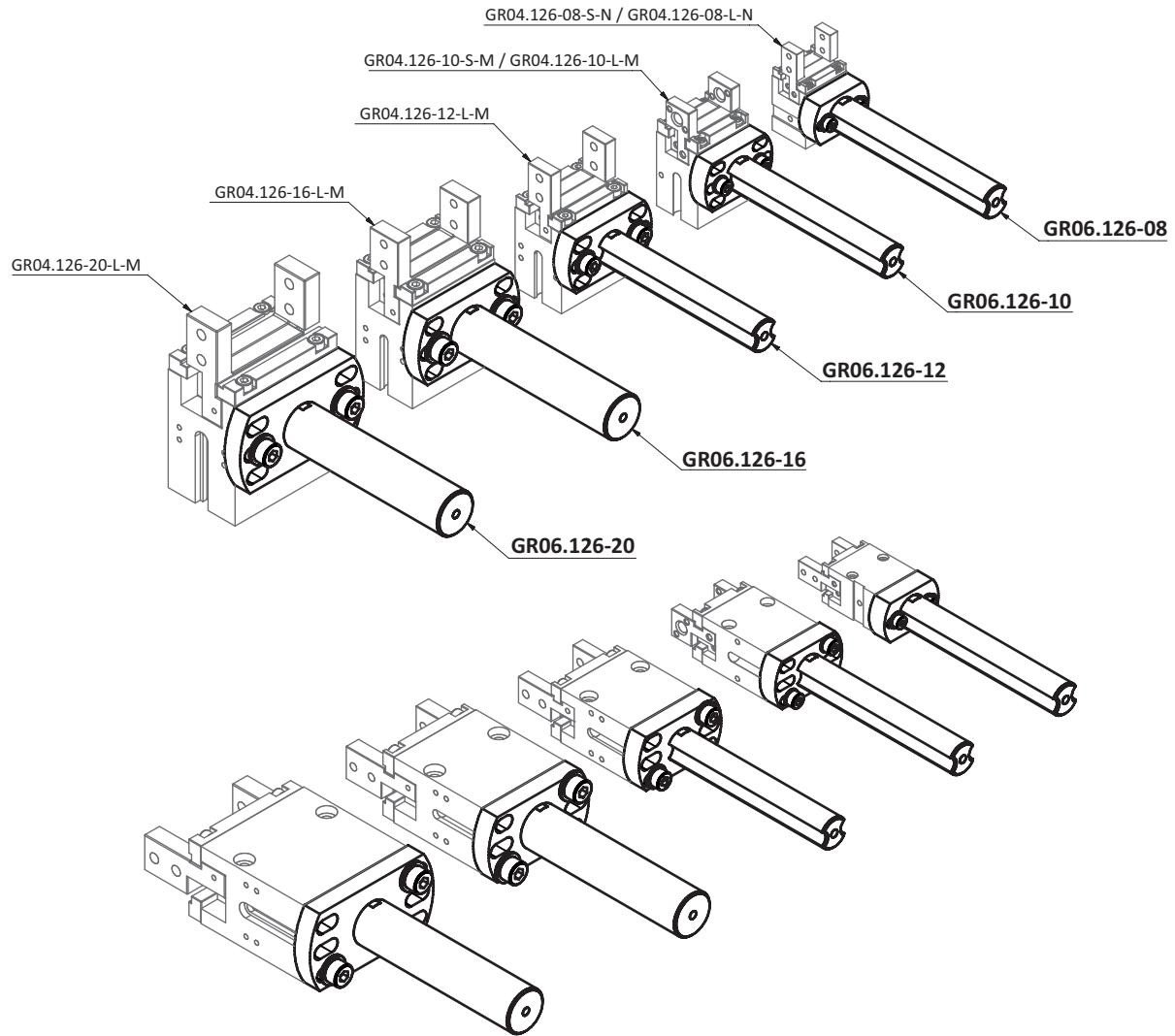
Produktbeschreibung

- > Produkt zur Befestigung von Parallelgreifern der Serie 126
- > Befestigung des Parallelgreifers in unterschiedlicher Orientierung möglich
- > Schaftdurchmesser passend zu verschiedenen Klemmelementen
- > Schrauben zur Parallelgreiferbefestigung im Lieferumfang enthalten

Technische Daten

Art.-Nr.	Geeignet für Parallelgreifer	Gewicht [g]
GR06.126-08	GR04.126-08	15
GR06.126-10	GR04.126-10	17
GR06.126-12	GR04.126-12	19
GR06.126-16	GR04.126-16	41
GR06.126-20	GR04.126-20	46

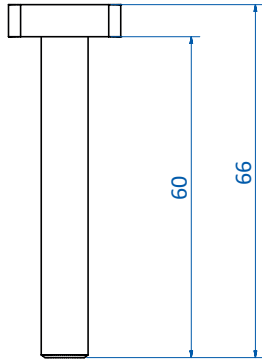
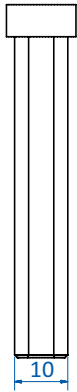
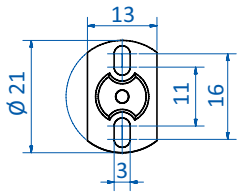
Anwendungsbeispiele



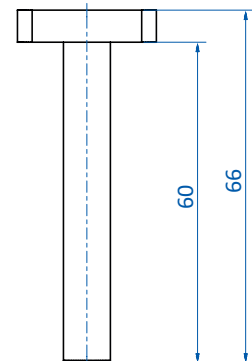
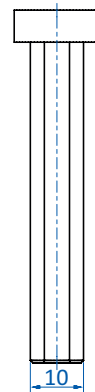
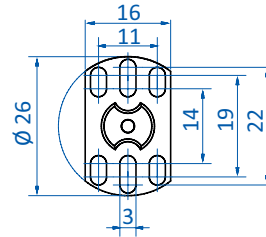
Greifer | Parallelgreifer

Halter für Parallelgreifer Serie 126

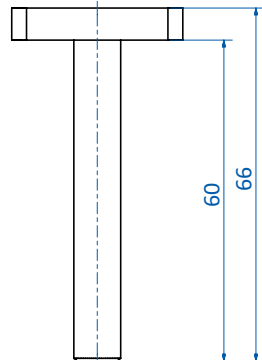
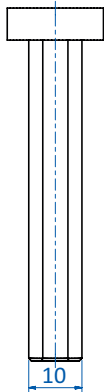
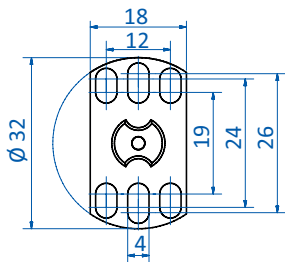
Abmessungen



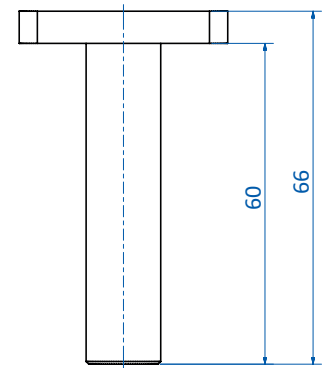
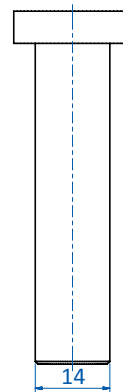
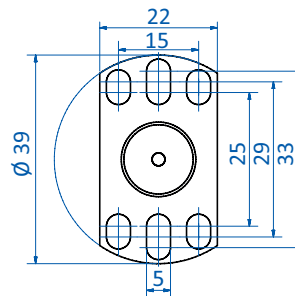
GR06.126-08



GR06.126-10

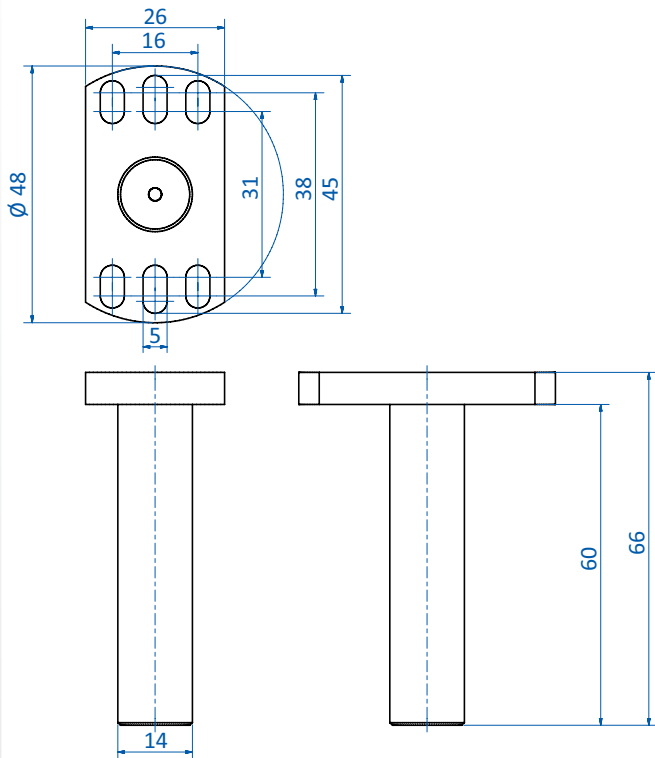


GR06.126-12



GR06.126-16

Abmessungen



GR06.126-20